



**Steel Plate Rack**

**Product introduction**

Suitable for manual operation  
Load capacity 100kg-500kg/level  
Beam adjusted by 50mm pitch.  
Frame type structure, convenient for detach

**Product features**

Consisting by upright frame, beam, steel plate. Suitable for manual operation. This kind of racking is low in cost, safe, adjustable, pretty in appearance, convenient for assembling and disassembling, and excellent in performance.



**Heavy Duty Pallet Rack**

**Product introduction**

Suitable for forklift operation  
Load capacity 1000kg-4500kg/level  
Beam adjusted by 75mm pitch.  
Can be customized according to customer requirements

**Product features**

Heavy duty pallet rack, consisting of upright frame, beam and other parts. The frame is assembled by uprights and bracings and beams are fixed to uprights by hooks. The height of each layer can be adjusted by 75mm. the capacity of each layer can be up to 4500kg. It's convenient to load and unload pallets with goods on by using forklifts. Pallet rack is an ideal storage system for all warehouse storage needs. Widely used in fields of manufacturing industry, the third part logistics, distribution centers and so on



**Mezzanine Rack**

**Product introduction**

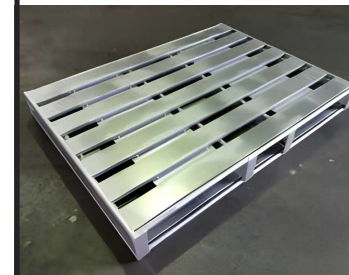
Load capacity max 1000k.g/m<sup>2</sup>  
Can be equipped with lighting system  
Steel floor type: Solid steel floor, grating floor, non-slip floor.  
Can be customized according to customer requirements

**Product features**

Mezzanine floor supported by shelving or pallet rack, Customized for several layers, equipped with staircase, hydraulic platform.  
Functions: Human access, increase space and efficiency with a mezzanine designed for your application and budget.  
Equipped with staircase, handrail, lighting. If inner span of beam be suitable, the total cost can be saved alot.  
You can lift heavy goods to top floor by forklift or hydraulic platform.  
Shelving loading: 300kg-1000kg/layer.



**STEEL PALLET**



**PLASTIC PALLET**



**HYDRAULIC CYLINDER**



**FRP PALLET**



**HYDRAULIC JACK**



**HYDRAULIC POWER PACK**

